



AVALANCHE

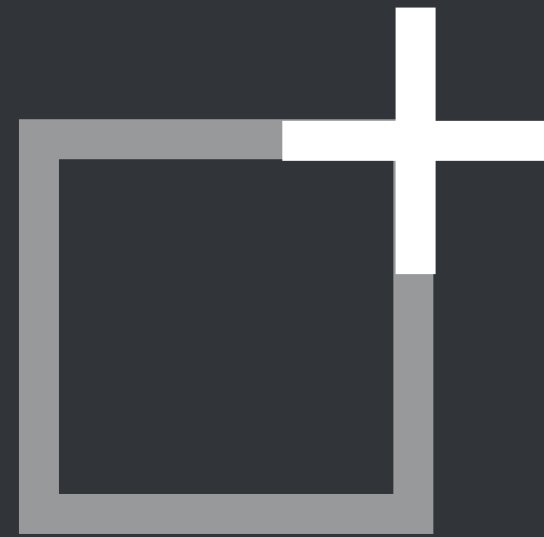
 **Teton County**
Wyoming
43.85°N, 110.63°W



Google

Google INEGI Data SIO, NOAA, U.S. Navy, NGA, GEBCO IBCAO Landsat / Copernicus U.S. Geological Survey Camera : 19,042 km 1°50'35"N 45°57'31"E 100%

Navigation controls including a 3D view toggle, a person icon, a compass icon, and a globe icon.



10,920 sq. km:

TETON COUNTY WYOMING, USA



21,000 Residents

2.6 million Annual Visitors

Closest Level 1 Trauma Unit is 450km



1/4th

The size of Switzerland

+ TETON COUNTY SEARCH & RESCUE





-
- Formed in 1993
 - 38 volunteer members
 - 24/7/365
 - 75-100 missions annually

MISSION PROFILE

- Swift Water Rescue
- Avalanche Rescue
- Cave Rescue
- Downed Aircraft ELT Tracking
- Lost Person Search
- Helicopter Operations
- High Angle Rescue
- Wilderness Medicine
- Patient Evacuation
- Backcountry Skiing Rescue
- Snowmobile Rescue





TETON RANGE

- 65km long and 11-14.5km wide
- 8 peaks above 3,700m
- Grand Teton 4,198m,
rising 2,130m above the valley floor



TETON RANGE

Birthplace of ski mountaineering in North America.

Steve Romeo skiing the Sickie Couloir on Mt Moran above Bear Paw Bay and Jackson Lake.



TETON RANGE

Ski Mountaineering
Steep and Technical



TETON RANGE

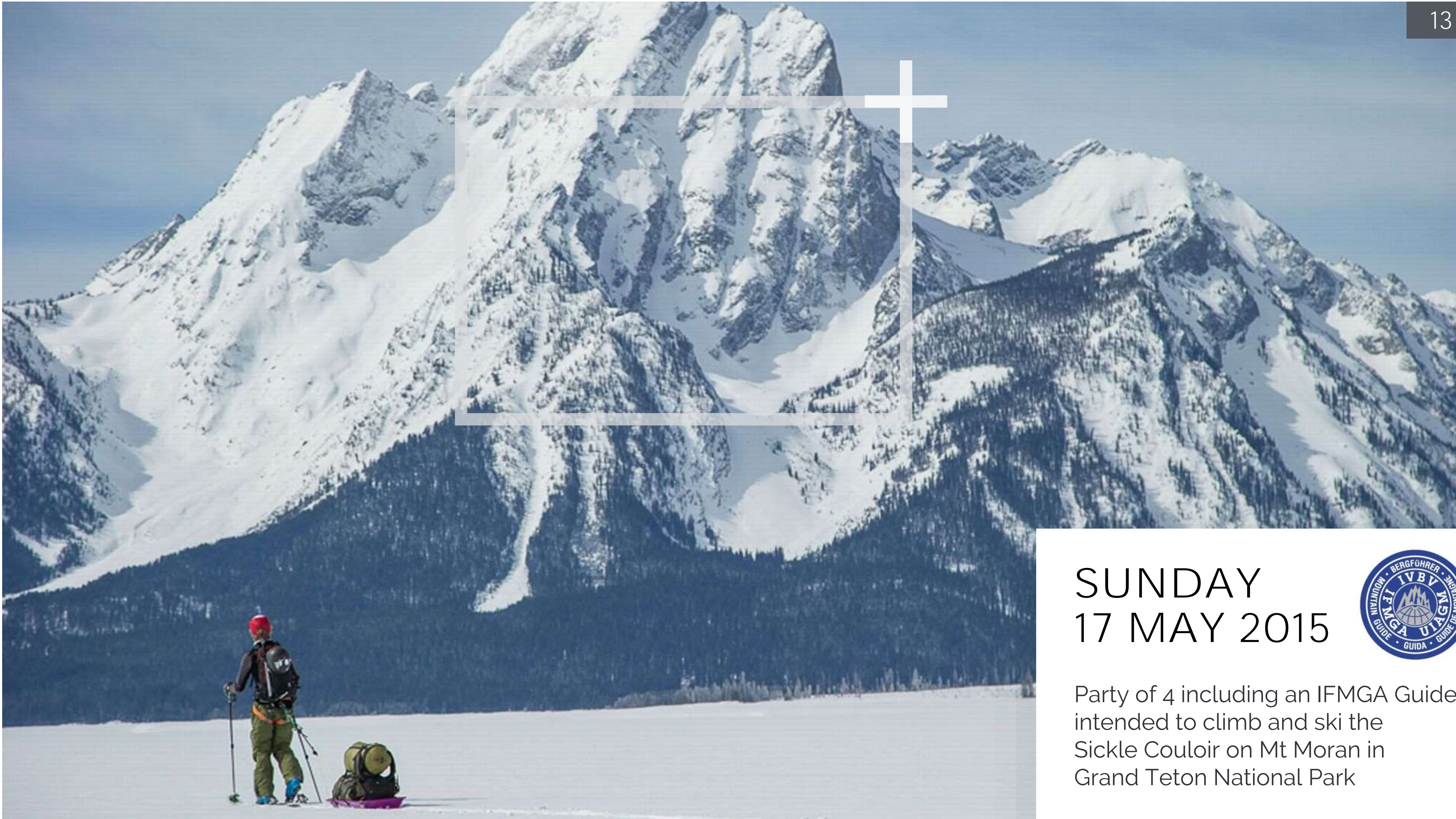
Ski Mountaineering
Long Approaches

TETON RANGE

Ski Mountaineering
Stunning Scenery







SUNDAY
17 MAY 2015

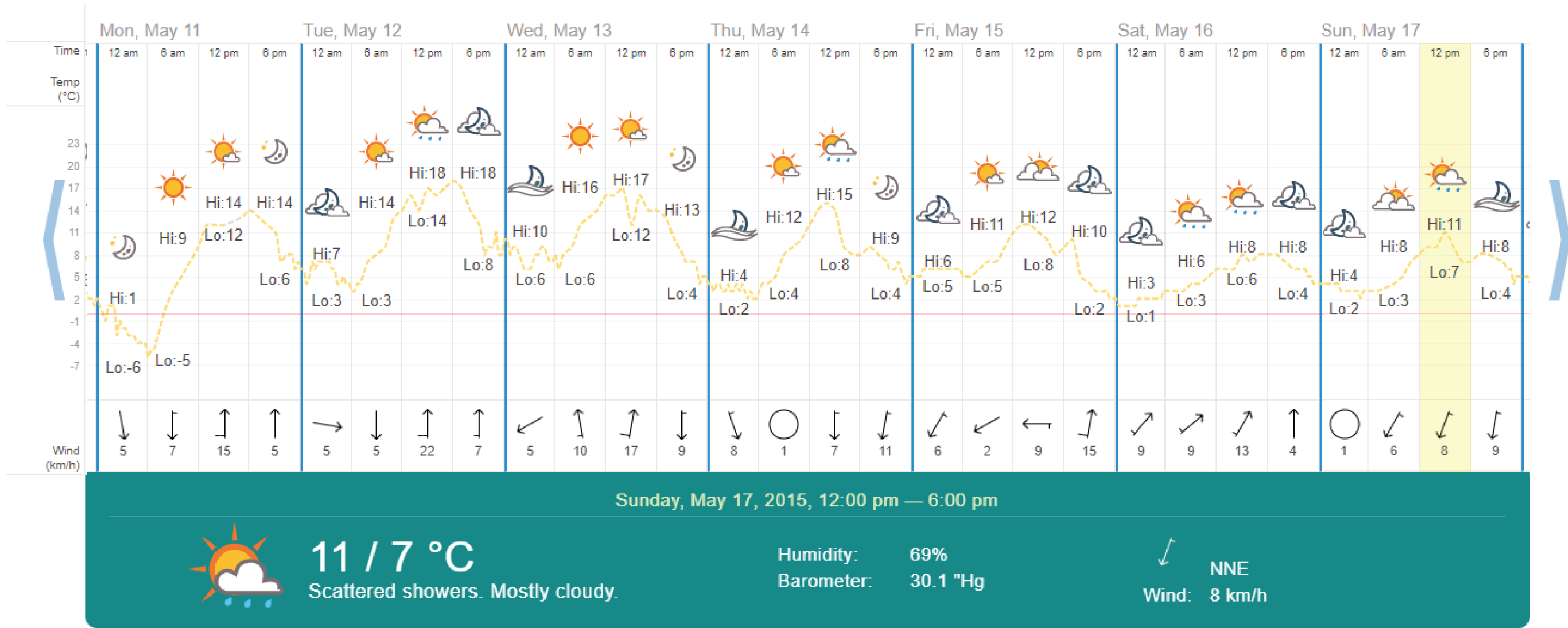


Party of 4 including an IFMGA Guide
intended to climb and ski the
Sickle Couloir on Mt Moran in
Grand Teton National Park

SICKLE COULOIR
MT MORAN



May 2015 Weather in Grand Teton National Park — Graph

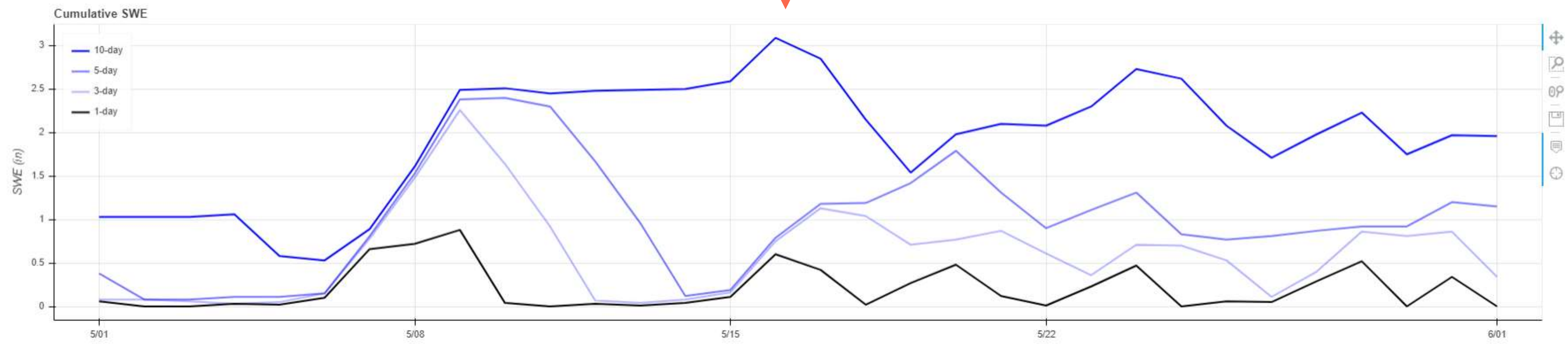


WEATHER FORECAST WEEK OF FATAL AVALANCHE

MAY 17, 2015



Mid Mountain Raymer Rendezvous Bowl

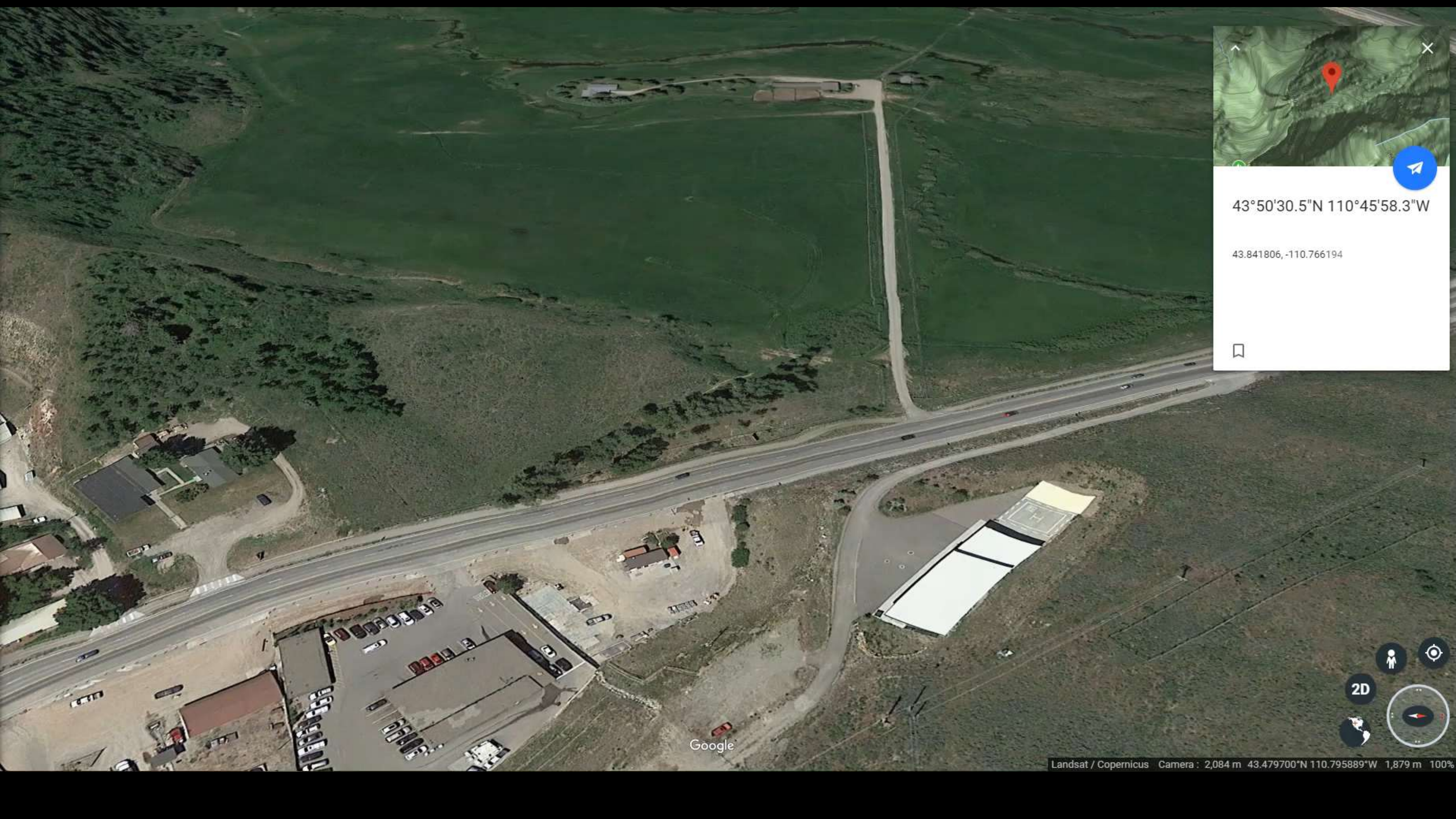


SNOW WATER
EQUIVALENT
(SWE) MAY 2015

SUNDAY
17 MAY 2015
0933HRS

911 Call - AVALANCHE





43°50'30.5"N 110°45'58.3"W

43.841806, -110.766194



2D



Google

GRAND TETON NATIONAL PARK WYOMING, USA

INCIDENT SITE

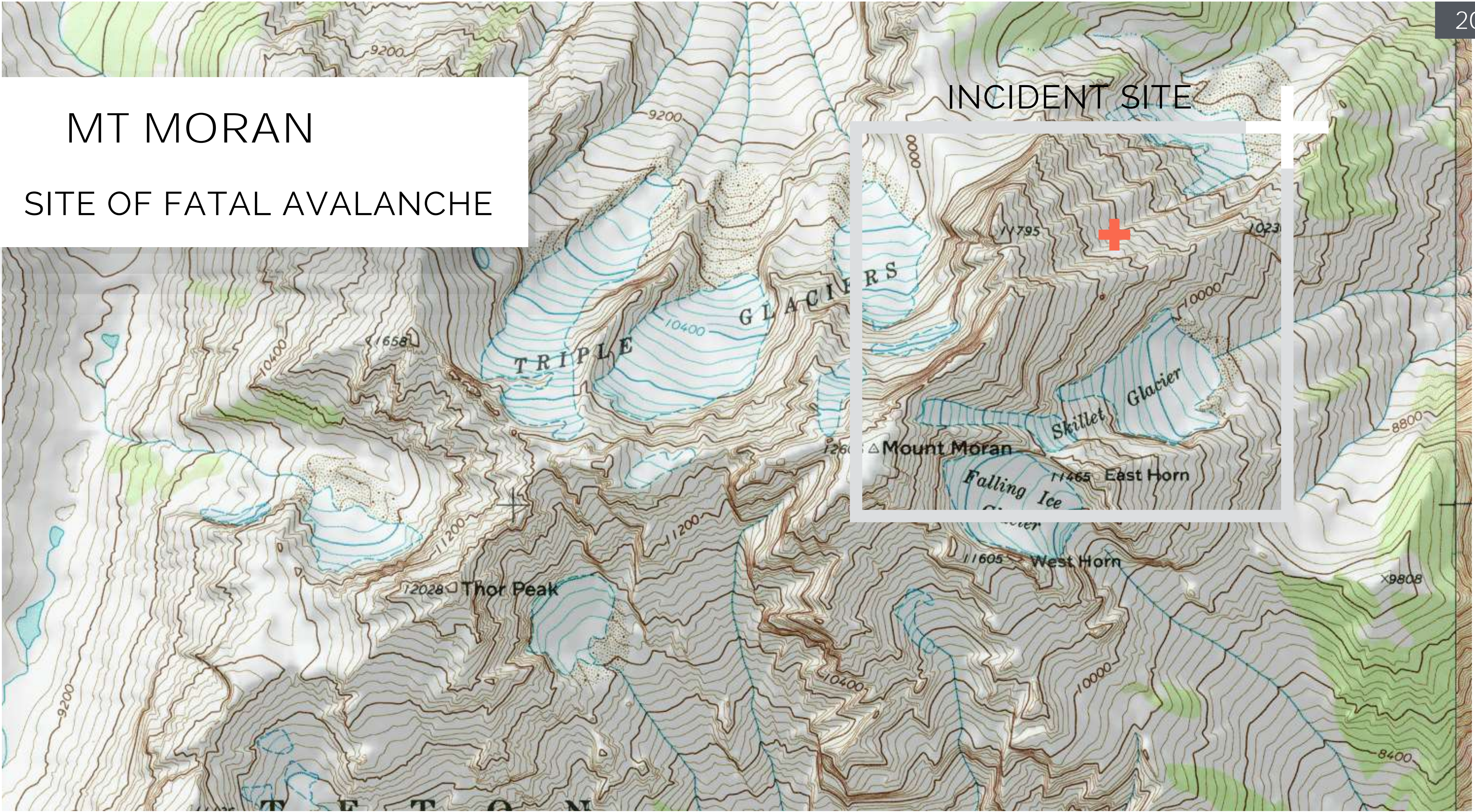


FORWARD OPERATIONS
JENNY LAKE RANGER RESCUE CACHE



MT MORAN SITE OF FATAL AVALANCHE

INCIDENT SITE



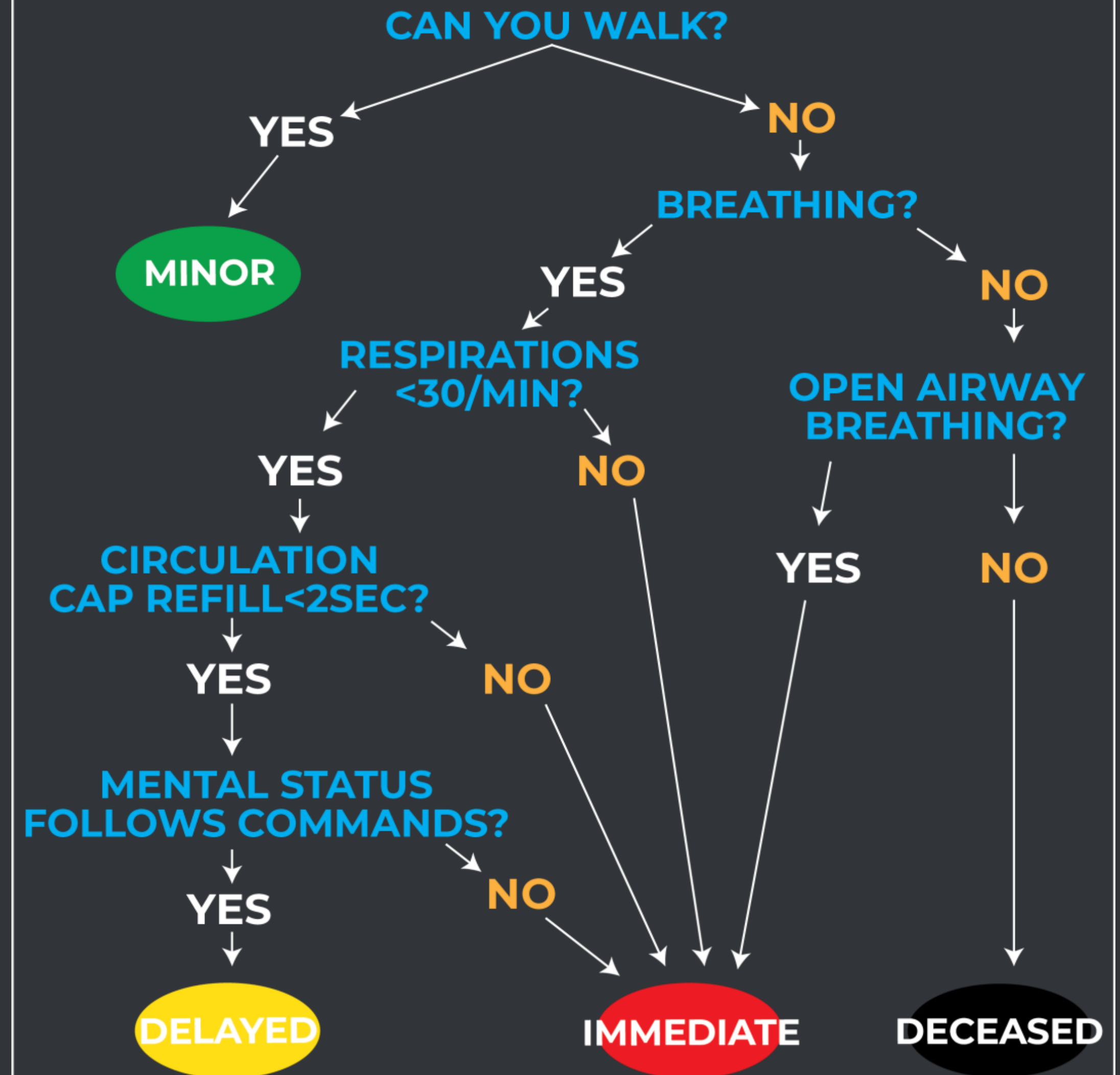
JENNY LAKE RANGER RESCUE CACHE

~40km North of TCSAR Hangar



MULTI-CASUALTY REPORTING FORMAT

Simple Triage And Rapid Treatment







CHALLENGES TO RESPONSE

- Complex rescue multiple victims.
- Remote location.
- Poor weather.



MISSION TAKEAWAYS

Unified interagency
response



CHALLENGES TO RESPONSE

Familiarity of victims
to rescuers.





MISSION TAKEAWAYS

Community Outreach

MISSION TAKEAWAYS

First Responder
Mental Health
Peer Support



TETON INTERAGENCY PEER SUPPORT
You Respond So We Respond



